

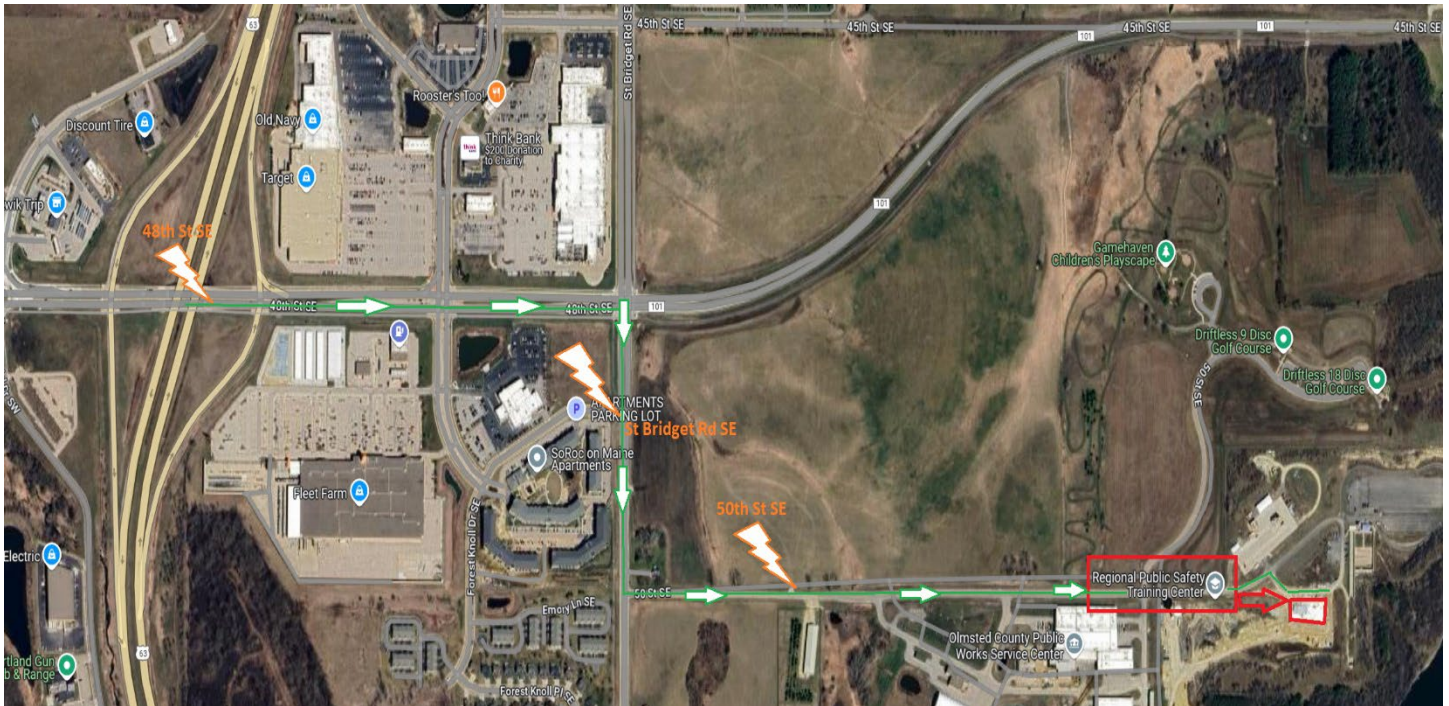


Olmsted County Sheriff's Office

Public Safety Training Center



Thank you for booking your event at the Olmsted County Public Safety Training Center! Before you arrive for your event, please take a moment to familiarize yourself with directions to our facility and share this information with whom you need to make sure they can locate our facility.



The Olmsted County Public Safety Training Center is a 33-acre facility located at 1550 50th Street SE, in Rochester, MN. It is a multi-purpose venue with training facilities and apparatus for multiple public safety disciplines to include law enforcement, corrections, fire service, and EMS.

Disclosure

While attending your event at our comfortable and state-of-the-art classroom facility, other portions of the grounds may be actively in use by one or more of our public safety partners. During your visit to our facility, there is a likelihood that you may be exposed to the sound of gunfire, explosions, and/or sirens. It is also possible that you may be exposed to smoke produced by one of our fire service burn props. To ensure the safety of our visitors, please do not enter areas closed by chains, barricades, or traffic cones, climb berms or approach fences. Additionally, please do not enter any of the ranges, driving pads, burn props, or other facilities without authorization from Training Center staff.

Jon Jacobson
Captain
Staff Training and Emergency Management
jonathan.jacobson@olmstedcounty.gov
507-328-6101

Taylor Schoenfelder
Sergeant
Staff Training and Emergency Management
taylor.schoenfelder@olmstedcounty.gov
507-923-8120

Amy Rayman
Training Records Technician
Staff Training and Emergency Management
amy.rayman@olmstedcounty.gov
507-328-6777

Parking:

The small parking lot on the southside of the Training Center (blue lot on map) is reserved for Training Center staff and class/meeting hosts. Attendees of classes and meetings taking place at the training center are asked to park in the large lot to the northeast of the training center (red lot on map). For classes and meetings exceeding 50 attendees, additional parking will be provided on the driving pad (yellow lot on map). The entrance to the building is located on the south side, indicated by the red marker on the map near the blue lot.



Audio/Visual equipment

A/V equipment may be made available for your use during your event. If A/V equipment is needed, meeting/event hosts will be given directions on its use, so please make arrangements with Training Center staff so we can provide a tutorial before your start time. If you run into technical difficulties, please stop and ask for assistance. Meeting/Event hosts are responsible to ensure no one other than Olmsted County ITS or Training Center staff troubleshoot technical difficulties with the A/V equipment.

Housekeeping

We would greatly appreciate your efforts in cleaning up after yourself to help keep our facility clean and easy to turn over for multiple events. Thank you for choosing the Olmsted County Public Safety Training Center, we look forward to your visit!

Jon Jacobson
Captain
Staff Training and Emergency Management
jonathan.jacobson@olmstedcounty.gov
507-328-6101

Taylor Schoenfelder
Sergeant
Staff Training and Emergency Management
taylor.schoenfelder@olmstedcounty.gov
507-923-8120

Amy Rayman
Training Records Technician
Staff Training and Emergency Management
amy.rayman@olmstedcounty.gov
507-328-6777